



THE  
**RIVIERA**  
— JOMTIEN —

**OFFICIAL  
SALES KIT**

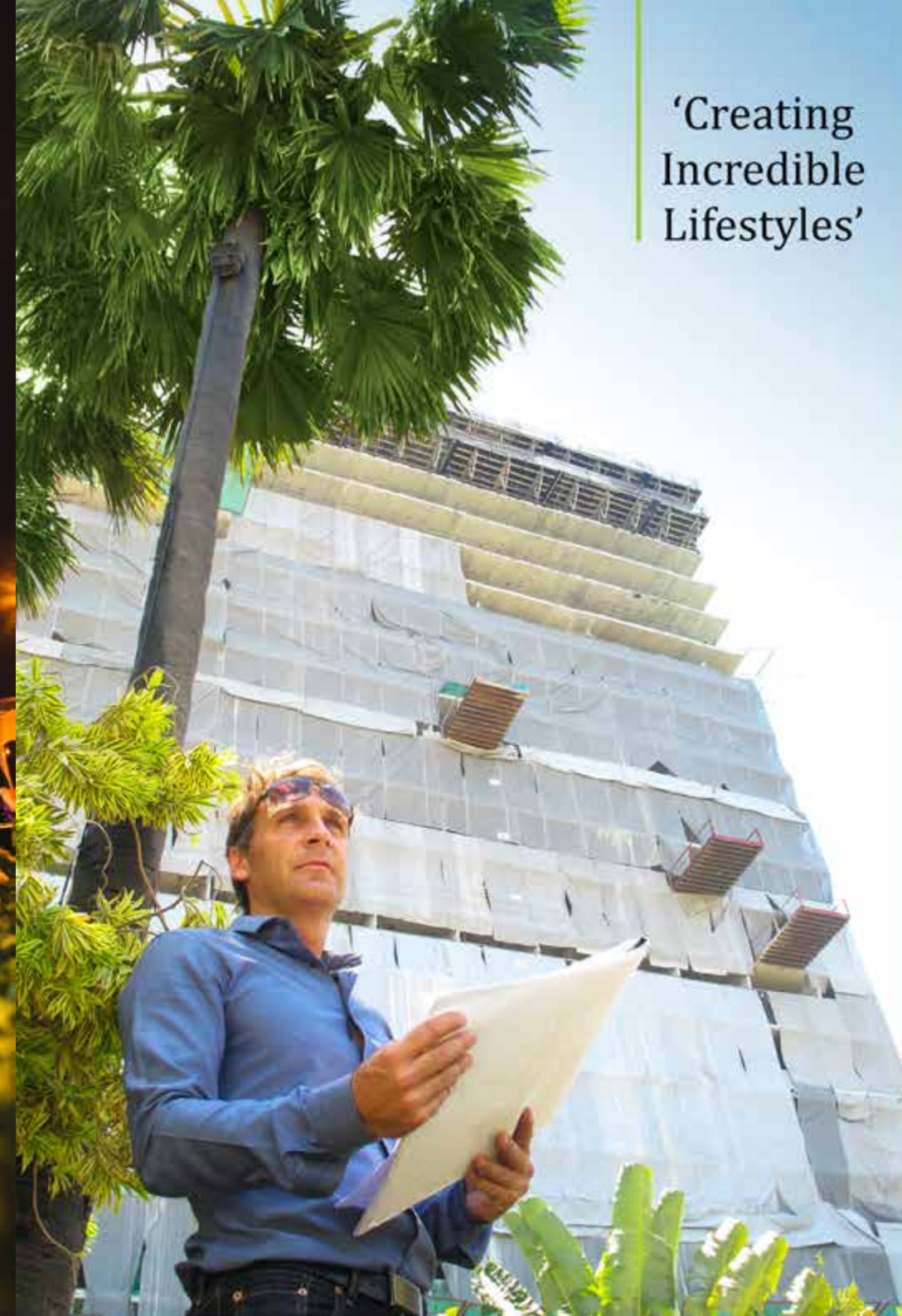
April 2017

**EIA**  
APPROVED  
★ ★ ★ ★ ★

*Born to be Glamorous*

**IR**  
RIVIERA  
GROUP





'Creating Incredible Lifestyles'



The Riviera Group is a luxury condominium developer, dedicated to create stunning modern landmarks to Pattaya's ever changing skyline with a focus on affordable yet high quality living.

The Riviera Group was founded, and is led by Mr Winston Gale, Founder and Co- Developer of the award winning development, The Palm.



The Palm, Winner of Best Condominium Eastern Seaboard at the Thailand Property Awards 2013. Winston Gale, Partner (second from left) seen here with fellow business partner khun Birathon Kasemsri Na Ayudhaya (second from right) and their wives, Sukanya Gale (left) and Kazuko Kasemsri Na Ayudhaya (right).



Construction Finance Contract Signing with

SCB committed to an 800 million THB loan to The Palm to assist in the construction of the 46 & 26 story luxury project in Wongamat, North Pattaya.



BEST LUXURY CONDO DEVELOPMENT (EASTERN SEABOARD)



Construction of The Palm, Wongamat Beach as of April 2016





Luxurious Interior at the Riviera, Wongamat Beach showroom.



'Emmy' The Riviera, Wongamat Beach Brand Ambassador.



Relax in or outside our peaceful showroom.



The glamorous Riviera Wongamat Beach showroom at night.

# THE RIVIERA — WONGAMAT BEACH —

EIA  
APPROVED  
★ ★ ★ ★ ★

UNDER CONSTRUCTION



The Riviera Wongamat Beach is The Riviera Group's maiden project.

The two tall towers of The Riviera Wongamat Beach reflect excitement, glamour and prestige whilst boasting world class facilities and commanding views of Pattaya's finest beach front in upmarket Wongamat.

The Riviera Wongamat Beach has firmly put The Riviera Group on the map as one of Thailand's most forward thinking and inspiring developers.



Mr Winston Gale and Mrs Sukanya Gale pictured with representatives of SCB, who have pledged their commitment to The Riviera Wongamat Beach with a 920 million THB loan to assist in the construction of the 40 & 43 story luxury project in Wongamat, North Pattaya.



Mr Winston Gale receiving award for The Riviera Wongamat Beach at the Thailand Property Awards 2016.



BEST LUXURY CONDO DEVELOPMENT (EASTERN SEABOARD)



Construction of The Riviera, Wongamat Beach as of February 2017





Grand interior & lush surroundings await at The Riviera Jomtien Showroom.



Metinee Kingpayome, The Riviera Jomtien Beach Brand Ambassador.



The Riviera Jomtien Showroom sparkles at night. The Riviera Group's second luxury project.



Luxury inside and out at The Riviera Jomtien Showroom.



The glamorous The Riviera Jomtien Showroom during the day.

# THE RIVIERA JOMTIEN

EIA APPROVED  
★ ★ ★

UNDER CONSTRUCTION



R R  
RIVIERA  
GROUP

Following on from its predecessor, The Riviera Wongamat Beach, The Riviera Jomtien, is a continuation of Winston Gales' vision of a modern Thailand.

The Riviera Jomtien comprises of a single story masterpiece, designed to make a statement and stand out from the skyline whilst enjoying direct commanding views over the entire Jomtien Beach area.

The Riviera Group look forward to delivering more prestigious and glamorous projects in the years to come.



Out comes the champagne at The Riviera Jomtien Showroom Launch. Pictured left to right, Mrs. Sukanya Gale, Mr. Winston Gale, Khun. Metinee Kingpayome (Riviera Jomtien Brand Ambassador), Deputy Mayor of Pattaya, Khun. Ronnakit Aegasing, Khun. Kasina Lee & Mr Rolf Haupt.



Lucky draw customer Khun Pratueng Pongsates receives his keys to his new Mercedes SLK during The Riviera Jomtien's E.I.A. approval celebration. Presented to him by Khun. Metinee Kingpayome, Mr Winston Gale and Deputy Mayor of Pattaya, Khun. Ronnakit Aegasing.





Helping to renovate the Hand to Hand foundation school.



The Riviera Jomtien E.I.A. Approval Party and Car Giveaway attracted guests from all over Thailand.



Riviera Jomtien customer, K. Pratueng Pongsates with his new Mercedes SLK that he won in the grand prize draw.



*Passion • Events • Style*

Great partnerships are important to us and are instrumental to our success.

With our unique Riviera Group style, our events, promotions and collaborations with other great businesses and organisations, showcases our commitment to creating incredible lifestyles.

The Riviera Group are also extremely proud of our support and involvement with local charities and good causes.



A Pattaya first, as we installed a glamorous showroom inside Central Festival shopping mall for the soft launch of The Riviera Jomtien.



Our Sponsorship with Movers and Shakers has reignited the networking scene.



Our Sponsorship of Souled Out and TFI events, keeps us in touch with the local expat community while also helping out local charities.







Our colourful staff participating in the Pattaya Marathon and The Pattaya Color Run



Healthy employees, healthy company



Riviera Group staff on their bikes for Bike For Dad day.



The Riviera Group family enjoys a well deserved holiday.



Staff participating in the annual Pattaya Bed Race.



Emmy and Lorenzo pictured with Mr. Winston Gale



K. Metinee attending The Riviera Jomtien Soft Launch at Central Festival, Pattaya.



## *Family • Teamwork • Dedication*

The Riviera Group are not just a luxury condominium developer. We are great team and family that are enthusiastic and dedicated to what we do and how we approach our work.

The Riviera Group are proud to have K. Metinee Kingpayome (The Face Thailand) as the brand ambassador of The Riviera Jomtien and part of our growing family.

We are also proud to have the beautiful Emmy and Lorenzo as our Riviera Wongamat Beach Ambassadors.







THE  
**RIVIERA**  
— JOMTIEN —

Welcome to The Riviera Jomtien.

A luxury high-rise condominium development located in the heart of Jomtien Beach.

Designed by KTG, The Riviera Jomtien gives buyers ultra-stylish building architecture, combined with highly desirable lifestyle facilities that aim to create memories to last a lifetime.

The Riviera Jomtien comprises of a single story masterpiece, designed to make a statement and stand out from the skyline whilst enjoying direct commanding views over the entire Jomtien Beach area.

The Riviera Jomtien reflects success, glamour, excitement and prestigious in it's feel and culture.

Being a part of this glamorous lifestyle, means entering a desirable and privileged world, with access to some of the best and well thought-out facilities available in Pattaya.

Whether you enjoy champagne breakfasts, or the quieter serene lifestyle, The Riviera Jomtien really does cater for all tastes and most financial considerations.

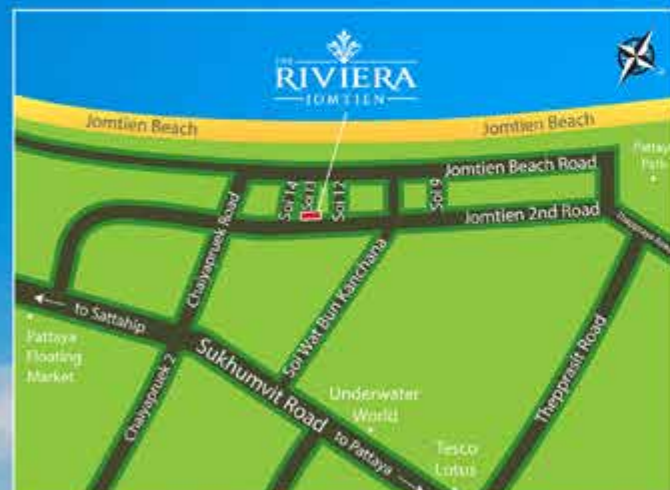
Celebrate with us the Riviera lifestyle, and enjoy being a part of a vibrant and trend-setting project that will reward you and your family for many years to come.

**R**  
RIVIERA  
GROUP



“In the heart of Jomtien”

Location



THE RIVIERA JOMTIEN

Seven Seas  
La Santir  
Veranda  
Nam Talay

Reflections  
Centara Grand Residences  
La Royal  
Lumpini Park Beach  
Cetus  
Jomtien Beach Road  
View Talay 8

Jomtien Tower & Water Park  
Atlantis  
Aqua  
View Talay's  
Pattaya View Point  
Pratumnak Hill  
Bali Hai Pier  
Pattaya Beach Rd

Jomtien 2nd Road  
(to Sattahip)

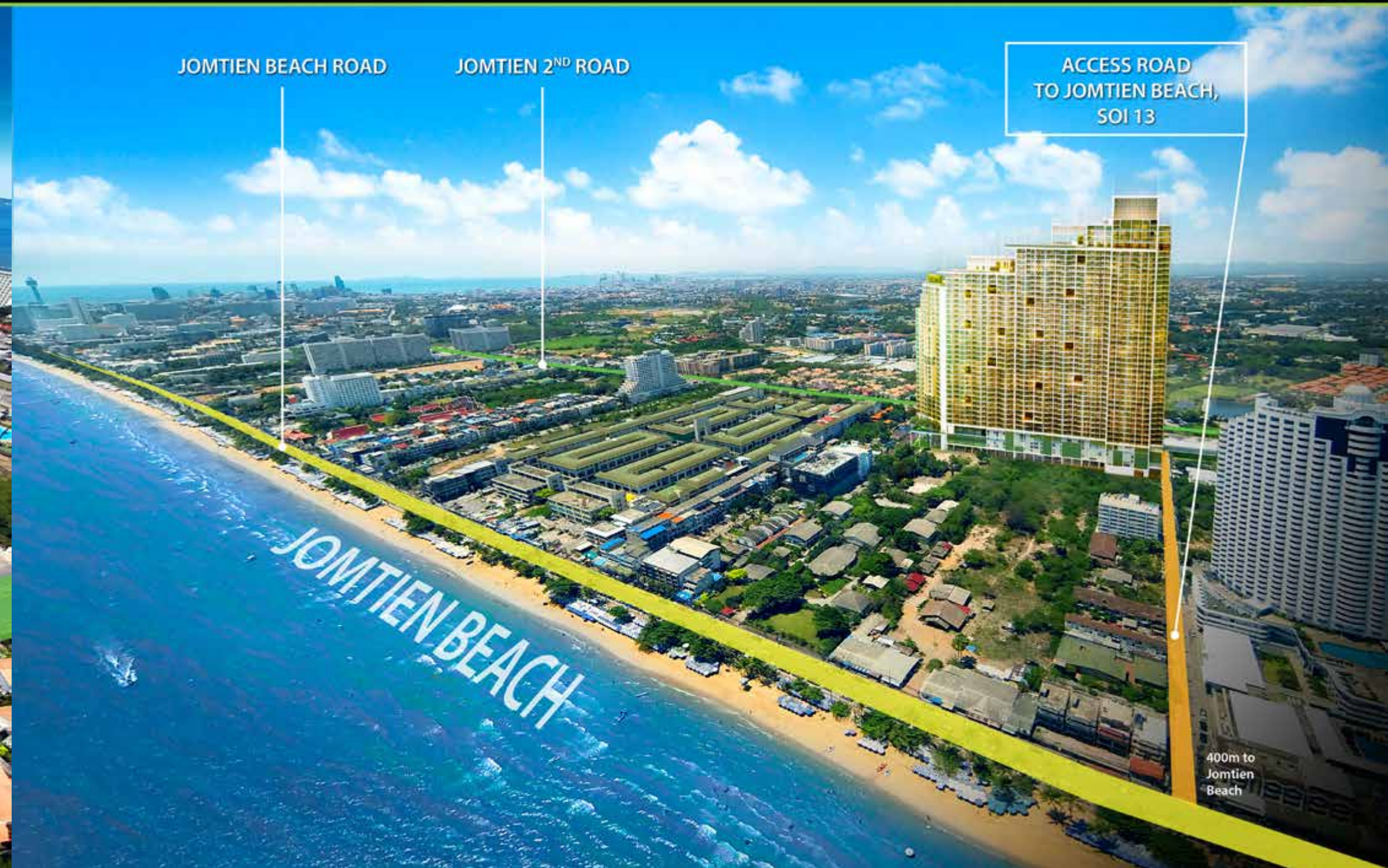
Jomtien 2nd Road  
(To Pattaya)



“Your road to the Riviera”



Direct Beach Access





“Your ocean dreams”

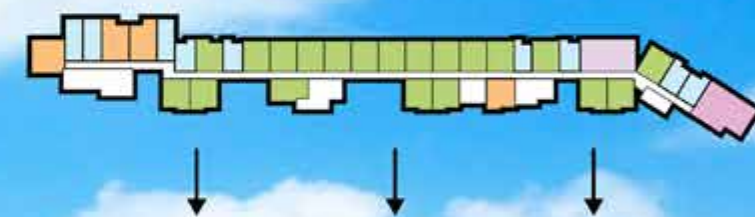
Front View - 46<sup>th</sup> Floor





“Your unforgettable views”

Rear View - 46<sup>th</sup> Floor





“Choose your own Lifestyle”

Selling Points



- Luxury high-rise condominium designed to be unique, modern, and sophisticated. Enjoying dramatic and dynamic features that sets itself apart & provides complete Individuality amongst Pattaya's Skyline.
- The most rapidly expanding location in and around Pattaya enjoying an already established reputation for it's quiet yet convenient position.
- Conveniently located off the all-new 2nd road, enjoying excellent access to Pattaya's main Sukhumvit Road.
- Over 80% of units feature direct sea views that enjoy direct-view-facing units (No views from balcony's located on the side of the building).
- A Rarely available site that takes full advantage of it's views and enjoying an incredible 300 metre frontage to Jomtien's main road access.
- Benefiting from sitting on over 6 Rai of land (2.5 acres) with the extra advantage of Commercial units providing on-site food, drink & all things convenient to make your home even more enjoyable.
- Only 2 minutes walk to the beach. Enjoying a rare, direct-road leading from the beach directly into the project.

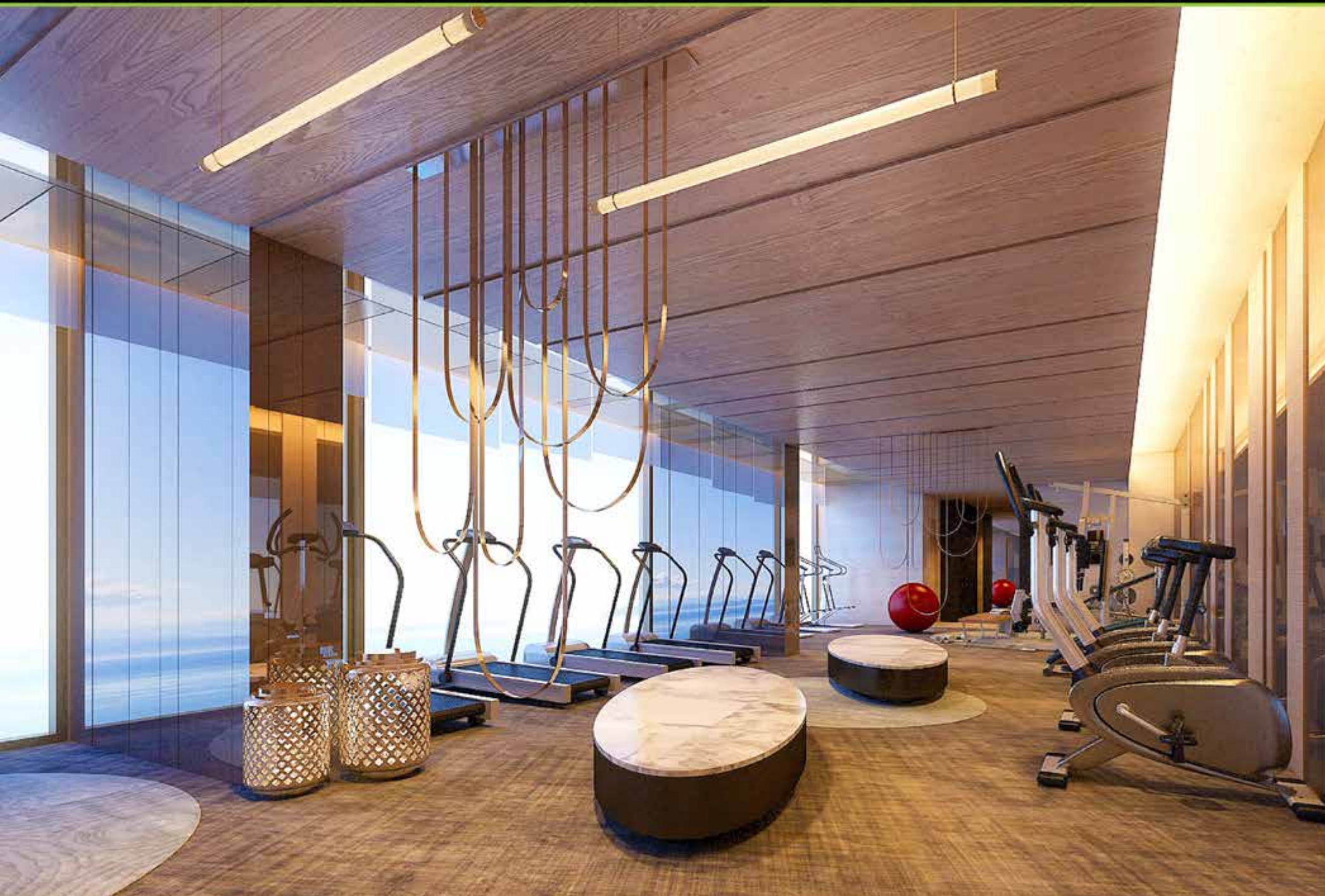
- Extremely competitively priced compared to neighbouring projects with prices up to 40% less than beach-front products sharing the same beach.
- A wide range of extensive facilities available, including extensive multi-level vast pools, Podium play area and a Jungle bamboo forest.
- 42 Rear & 16 Front Relaxation garden areas designed into the building for buyers well-being.
- Entire 42nd floor dedicated to leisure and recreation. A large owners sky lounge complimented with sunset terrace, gym, gardens, jacuzzi's, BBQ area, quiet zones and sala's.
- Infinity sky pools located on the 37th and 42nd floors providing dramatic 360 degree panoramic views.
- 3 Dedicated lift areas with 2 dedicated lobby areas providing 6 high-speed lifts for your day to day convenience.
- Developed by the Founder and Co-Developer of The Palm, Wongamat Beach, Winner of the 2013 Thailand Property Awards 'Best Condominium on the Eastern Seaboard'.

“Reflecting your personal style...  
with charm and character”



“Relax, you deserve it”

Your Facilities



#### RESIDENCES FACILITIES:

- On-ground large ocean pool
- Various children's pools
- Multi-level sun-deck areas
- Various rock and natural water features
- Kids' club & children's playground
- Extensive fitness room, sky gym & outdoor gym
- Lush tropical landscaping
- Floating pavilions & sala's with seated pool areas
- Entire 42<sup>nd</sup> floor dedicated for owners recreation
- Extensive recreational area
- Water sliders & beach effect pool areas
- 58 quiet garden zones & elevated garden areas
- Hotel styled drop-off area's
- Resort styled lobby area
- Commercial units providing convenient services

#### COMMERCIAL AREA:

- 25 commercial units offering various services
- Dedicated food and beverage shops

#### RESIDENCE SERVICES:

- 24-Hour security
- WIFI internet

#### SKY TERRACE:

- 37<sup>th</sup> Floor - large pool and decking areas
- 42<sup>nd</sup> Floor - infinity edge sky-pool with decking areas
- Sky jacuzzis, sunken pool beds
- Owners large lounge area and sunset terrace
- Sala & lounge relaxation areas







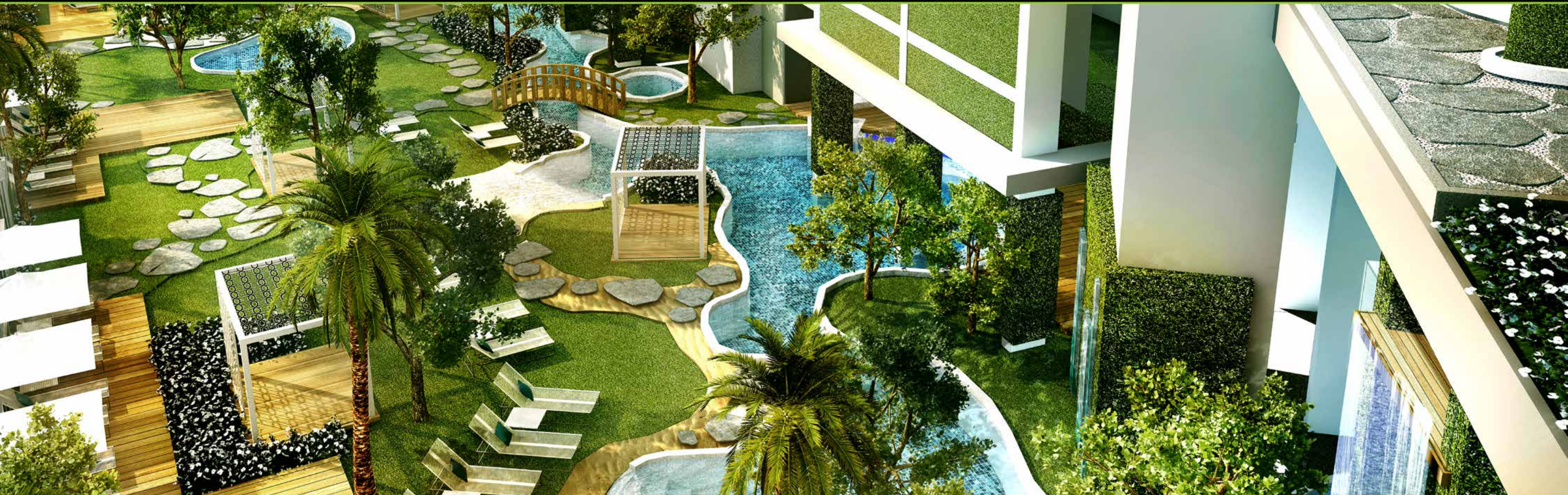
- |                     |                   |                  |
|---------------------|-------------------|------------------|
| 01. Project Signage | 05. Swimming Pool | 09. Kid's Pool   |
| 02. Guard House     | 06. Sand Beach    | 10. Jacuzzi Pool |
| 03. Feature Wall    | 07. Pool Deck     | 11. Bridge       |
| 04. Drop Off        | 08. Pavilion      | 12. Lawn Area    |





“Relax in style”

Landscaping Masterpiece





“Creating your magical moments”

Landscaping Masterpiece





“Relax in your surroundings”

Landscaping Masterpiece



4<sup>TH</sup> FLOOR: PODIUM

All plan details and artistic renderings are subject to any amendments as required by relevant authorities. The company reserves the right to change the project details without prior notice.

THE  
**RIVIERA**  
— JOMTIEN —



“Your escape”

Landscaping Masterpiece



All plan details and artistic renderings are subject to any amendments as required by relevant authorities. The company reserves the right to change the project details without prior notice.





“Live your life at the top”

Landscaping Masterpiece



37<sup>th</sup> FLOOR: CONCEPTUAL LANDSCAPE



“Your luxurious sky pools”

Landscaping Masterpiece



42<sup>ND</sup> FLOOR: CONCEPTUAL LANDSCAPE

All plan details and artistic renderings are subject to any amendments as required by relevant authorities. The company reserves the right to change the project details without prior notice.

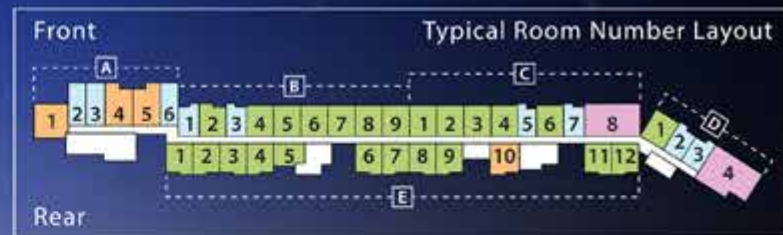








# "Dramatic Styling"



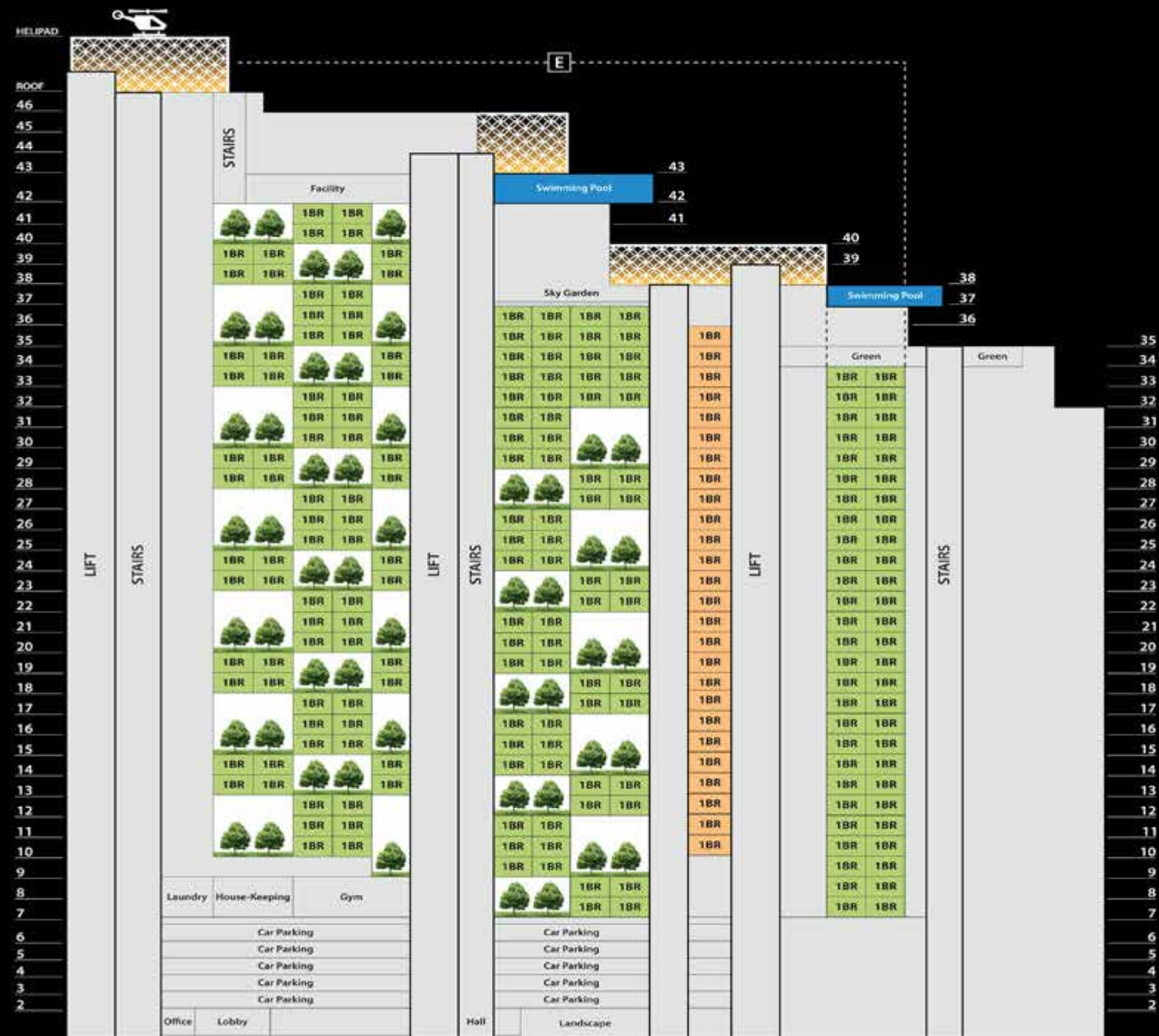
Land Area: 10,062 sq.m  
 Total Saleable Units: 1,075  
 Storeys: 46  
 Parking Spaces: 310 lots

Total No. of units

- Studio: 275 units
- 1 Bed: 733 units
- 2 Bed: 63 units
- Duplex: 4 units

# Matrix

## Rear

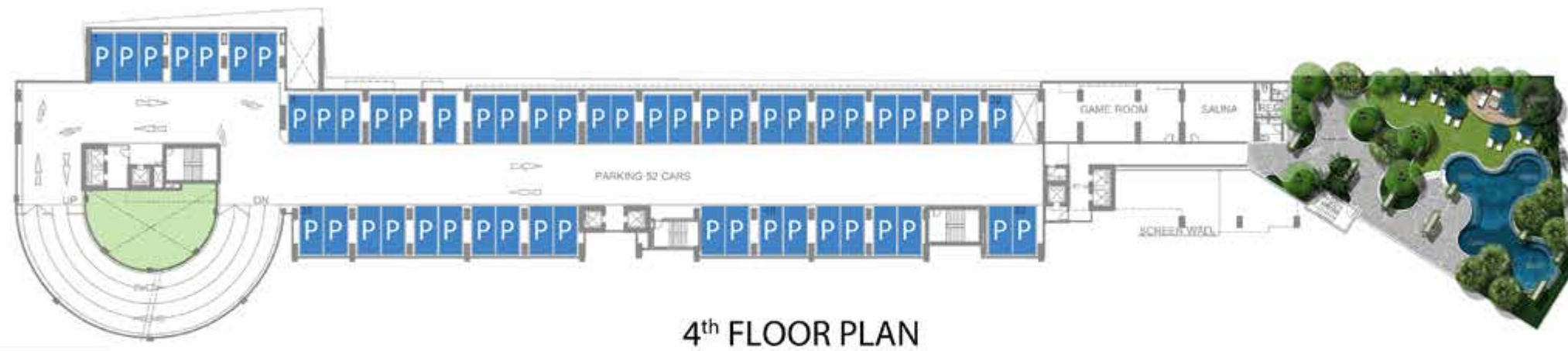
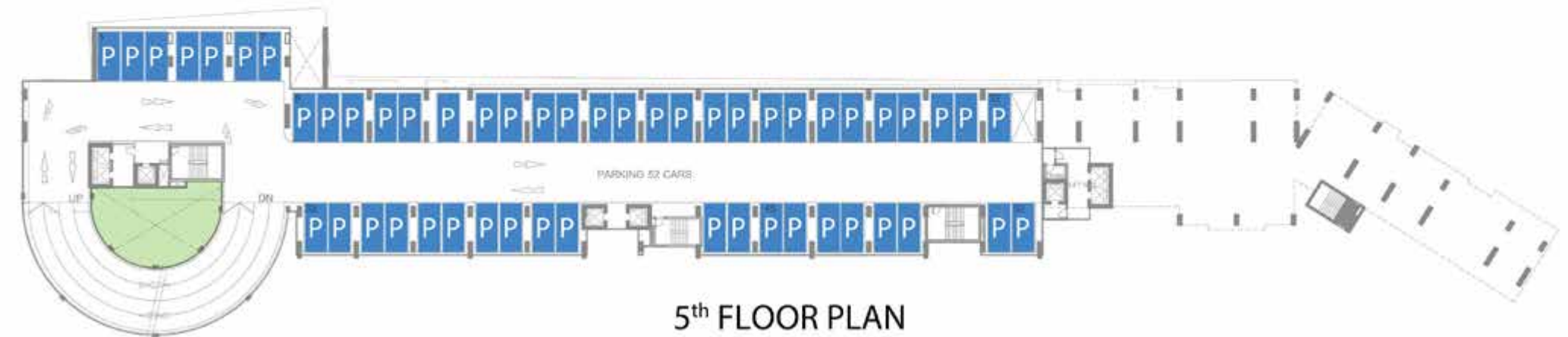


- 1 Bed (1BR)  
Range: 34 to 35.3 Sq.m
- 1 Bed (1BR)  
Range: 35.7 to 48 Sq.m











# Middle Floor Plans

7<sup>th</sup> | 8<sup>th</sup>

● STU  
Studio  
22 to 33 Sq.m

● 1BR  
1 Bedroom  
34 to 35.3 Sq.m

● 1BR  
1 Bedroom  
35.7 to 48 Sq.m

● 2BR  
2 Bedroom  
74 to 104 Sq.m



7<sup>th</sup> FLOOR PLAN

● STU  
Studio  
22 to 33 Sq.m

● 1BR  
1 Bedroom  
34 to 35.3 Sq.m

● 1BR  
1 Bedroom  
35.7 to 48 Sq.m

● 2BR  
2 Bedroom  
74 to 104 Sq.m



9<sup>th</sup> FLOOR PLAN



8<sup>th</sup> FLOOR PLAN



10<sup>th</sup> FLOOR PLAN



The floor plans and details are subject to any amendments as required by relevant authorities. The company reserves the right to change the project details without prior notice.

The floor plans and details are subject to any amendments as required by relevant authorities. The company reserves the right to change the project details without prior notice.

# Middle Floor Plans

9<sup>th</sup> | 10<sup>th</sup>





# Middle Floor Plans

11<sup>th</sup> | 12<sup>th</sup>

● STU  
Studio  
22 to 33 Sq.m

● 1BR  
1 Bedroom  
34 to 35.3 Sq.m

● 1BR  
1 Bedroom  
35.7 to 48 Sq.m

● 2BR  
2 Bedroom  
74 to 104 Sq.m



11<sup>th</sup> FLOOR PLAN

● STU  
Studio  
22 to 33 Sq.m

● 1BR  
1 Bedroom  
34 to 35.3 Sq.m

● 1BR  
1 Bedroom  
35.7 to 48 Sq.m

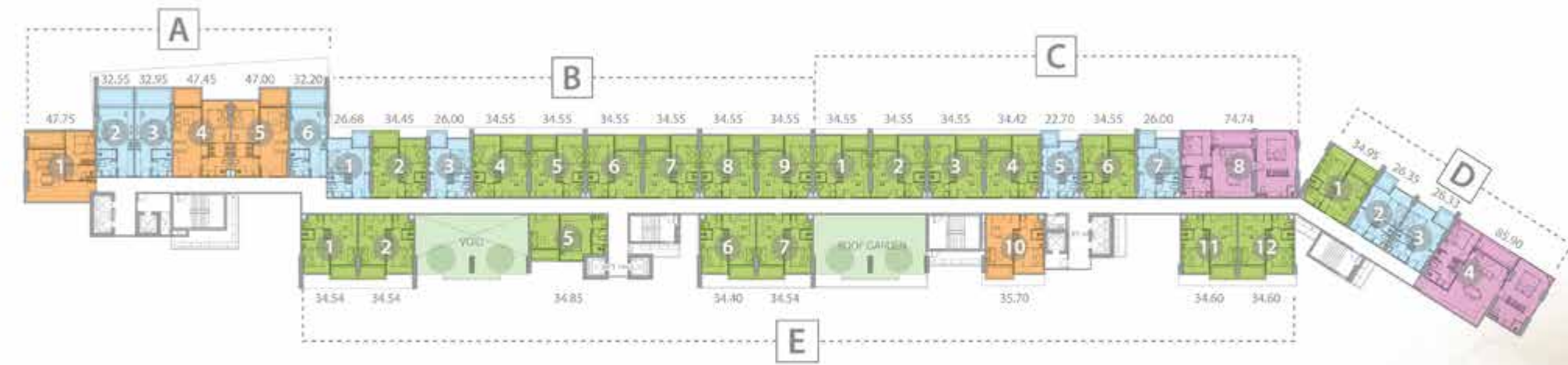
● 2BR  
2 Bedroom  
74 to 104 Sq.m



13<sup>th</sup> FLOOR PLAN



12<sup>th</sup> FLOOR PLAN



14<sup>th</sup> FLOOR PLAN



The floor plans and details are subject to any amendments as required by relevant authorities. The company reserves the right to change the project details without prior notice.

The floor plans and details are subject to any amendments as required by relevant authorities. The company reserves the right to change the project details without prior notice.

# Middle Floor Plans

13<sup>th</sup> | 14<sup>th</sup>





# Middle Floor Plans

15<sup>th</sup> | 16<sup>th</sup>

● STU  
Studio  
22 to 33 Sq.m

● 1BR  
1 Bedroom  
34 to 35.3 Sq.m

● 1BR  
1 Bedroom  
35.7 to 48 Sq.m

● 2BR  
2 Bedroom  
74 to 104 Sq.m



15<sup>th</sup> FLOOR PLAN



16<sup>th</sup> FLOOR PLAN



# Middle Floor Plans

17<sup>th</sup> | 18<sup>th</sup>

● STU  
Studio  
22 to 33 Sq.m

● 1BR  
1 Bedroom  
34 to 35.3 Sq.m

● 1BR  
1 Bedroom  
35.7 to 48 Sq.m

● 2BR  
2 Bedroom  
74 to 104 Sq.m



17<sup>th</sup> FLOOR PLAN



18<sup>th</sup> FLOOR PLAN

The floor plans and details are subject to any amendments as required by relevant authorities. The company reserves the right to change the project details without prior notice.

The floor plans and details are subject to any amendments as required by relevant authorities. The company reserves the right to change the project details without prior notice.





# Middle Floor Plans

19<sup>th</sup> | 20<sup>th</sup>

- STU  
Studio  
22 to 33 Sq.m
- 1BR  
1 Bedroom  
34 to 35.3 Sq.m
- 1BR  
1 Bedroom  
35.7 to 48 Sq.m
- 2BR  
2 Bedroom  
74 to 104 Sq.m



19<sup>th</sup> FLOOR PLAN



20<sup>th</sup> FLOOR PLAN



The floor plans and details are subject to any amendments as required by relevant authorities. The company reserves the right to change the project details without prior notice.

# Middle Floor Plans

21<sup>st</sup> | 22<sup>nd</sup>

- STU  
Studio  
22 to 33 Sq.m
- 1BR  
1 Bedroom  
34 to 35.3 Sq.m
- 1BR  
1 Bedroom  
35.7 to 48 Sq.m
- 2BR  
2 Bedroom  
74 to 104 Sq.m



21<sup>st</sup> FLOOR PLAN



22<sup>nd</sup> FLOOR PLAN

The floor plans and details are subject to any amendments as required by relevant authorities. The company reserves the right to change the project details without prior notice.





# Middle Floor Plans

23<sup>rd</sup> | 24<sup>th</sup>

● STU  
Studio  
22 to 33 Sq.m

● 1BR  
1 Bedroom  
34 to 35.3 Sq.m

● 1BR  
1 Bedroom  
35.7 to 48 Sq.m

● 2BR  
2 Bedroom  
74 to 104 Sq.m



23<sup>rd</sup> FLOOR PLAN



25<sup>th</sup> FLOOR PLAN



24<sup>th</sup> FLOOR PLAN



26<sup>th</sup> FLOOR PLAN



The floor plans and details are subject to any amendments as required by relevant authorities. The company reserves the right to change the project details without prior notice.

The floor plans and details are subject to any amendments as required by relevant authorities. The company reserves the right to change the project details without prior notice.

# Middle Floor Plans

25<sup>th</sup> | 26<sup>th</sup>

● STU  
Studio  
22 to 33 Sq.m

● 1BR  
1 Bedroom  
34 to 35.3 Sq.m

● 1BR  
1 Bedroom  
35.7 to 48 Sq.m

● 2BR  
2 Bedroom  
74 to 104 Sq.m





# Middle Floor Plans

27<sup>th</sup> | 28<sup>th</sup>

● STU  
Studio  
22 to 33 Sq.m

● 1BR  
1 Bedroom  
34 to 35.3 Sq.m

● 1BR  
1 Bedroom  
35.7 to 48 Sq.m

● 2BR  
2 Bedroom  
74 to 104 Sq.m



27<sup>th</sup> FLOOR PLAN



29<sup>th</sup> FLOOR PLAN



28<sup>th</sup> FLOOR PLAN



30<sup>th</sup> FLOOR PLAN



# Middle Floor Plans

29<sup>th</sup> | 30<sup>th</sup>

● STU  
Studio  
22 to 33 Sq.m

● 1BR  
1 Bedroom  
34 to 35.3 Sq.m

● 1BR  
1 Bedroom  
35.7 to 48 Sq.m

● 2BR  
2 Bedroom  
74 to 104 Sq.m





# Middle Floor Plans

31<sup>st</sup> | 32<sup>nd</sup>

● STU  
Studio  
22 to 33 Sq.m

● 1BR  
1 Bedroom  
34 to 35.3 Sq.m

● 1BR  
1 Bedroom  
35.7 to 48 Sq.m

● 2BR  
2 Bedroom  
74 to 104 Sq.m



31<sup>st</sup> FLOOR PLAN



33<sup>rd</sup> FLOOR PLAN



32<sup>nd</sup> FLOOR PLAN



34<sup>th</sup> FLOOR PLAN



The floor plans and details are subject to any amendments as required by relevant authorities. The company reserves the right to change the project details without prior notice.

The floor plans and details are subject to any amendments as required by relevant authorities. The company reserves the right to change the project details without prior notice.

# Middle Floor Plans

33<sup>rd</sup> | 34<sup>th</sup>

● STU  
Studio  
22 to 33 Sq.m

● 1BR  
1 Bedroom  
34 to 35.3 Sq.m

● 1BR  
1 Bedroom  
35.7 to 48 Sq.m

● 2BR  
2 Bedroom  
74 to 104 Sq.m





“Breathtaking weekends”



● STU  
Studio  
22 to 33 Sq.m

● 1BR  
1 Bedroom  
34 to 35.3 Sq.m

● 1BR  
1 Bedroom  
35.7 to 48 Sq.m

● 2BR  
2 Bedroom  
74 to 104 Sq.m

Middle Floor Plans  
35<sup>th</sup> | 36<sup>th</sup>



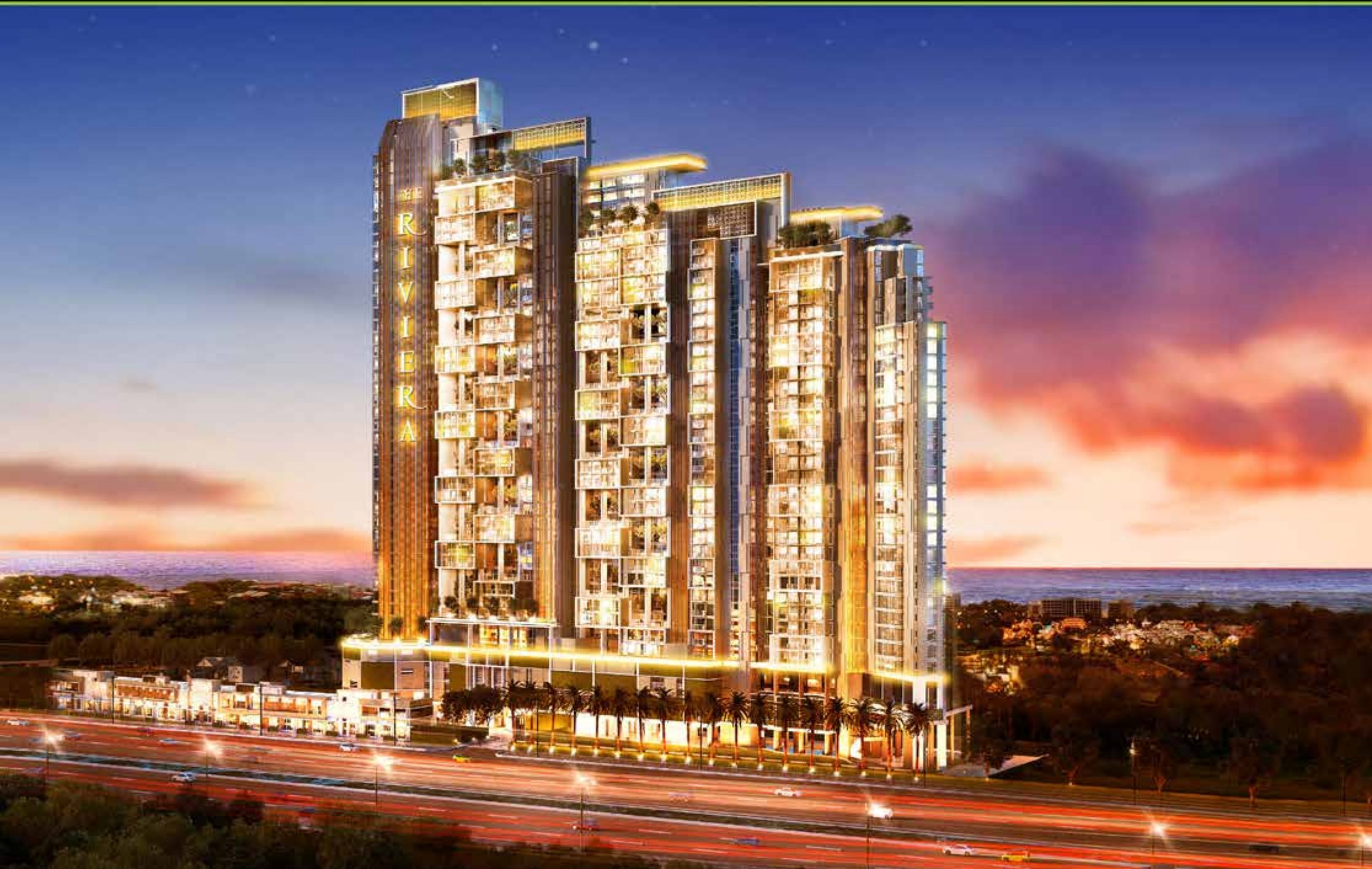
Middle Floor Plans  
KEY



The floor plans, details and artistic renderings are subject to any amendments as required by relevant authorities. The company reserves the right to change the project details without prior notice.



“Elegant high living”



Upper Floor Plans  
37<sup>th</sup> Sky Pool

● STU  
Studio  
22 to 33 Sq.m

● 1BR  
1 Bedroom  
34 to 35.3 Sq.m

● 1BR  
1 Bedroom  
35.7 to 48 Sq.m



37<sup>th</sup> FLOOR PLAN



The floor plans, details and artistic renderings are subject to any amendments as required by relevant authorities. The company reserves the right to change the project details without prior notice.



# Upper Floor Plans

38<sup>th</sup> | 39<sup>th</sup>

● STU  
Studio  
22 to 33 Sq.m

● 1BR  
1 Bedroom  
34 to 35.3 Sq.m

● 1BR  
1 Bedroom  
35.7 to 48 Sq.m

● 2BR  
2 Bedroom  
74 to 104 Sq.m



The floor plans and details are subject to any amendments as required by relevant authorities. The company reserves the right to change the project details without prior notice.

# Upper Floor Plans

40<sup>th</sup> | 41<sup>st</sup>

● STU  
Studio  
22 to 33 Sq.m

● 1BR  
1 Bedroom  
34 to 35.3 Sq.m

● 1BR  
1 Bedroom  
35.7 to 48 Sq.m

● 2BR  
2 Bedroom  
74 to 104 Sq.m



The floor plans and details are subject to any amendments as required by relevant authorities. The company reserves the right to change the project details without prior notice.





“Your luxurious address”

Upper Floor Plans  
42<sup>nd</sup> Sky Pool



42<sup>nd</sup> FLOOR PLAN



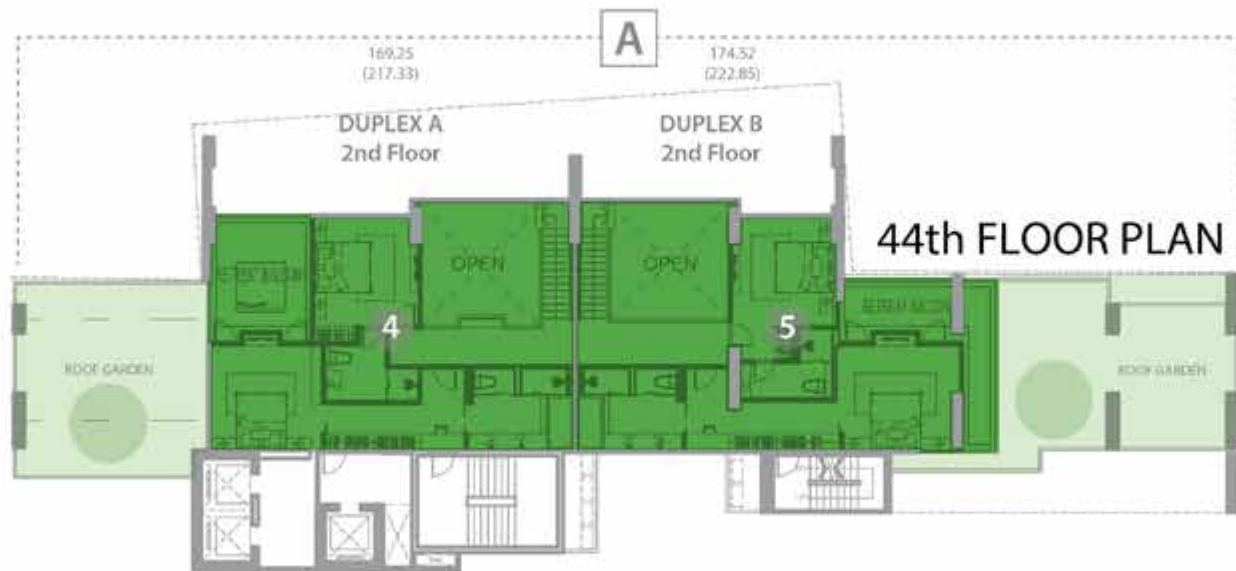
The floor plans, details and artistic renderings are subject to any amendments as required by relevant authorities. The company reserves the right to change the project details without prior notice.



# Upper Floor Plans

43<sup>rd</sup> | 44<sup>th</sup>

- STU  
Studio  
22 to 33 Sq.m
- 1BR  
1 Bedroom  
35.7 to 48 Sq.m
- 2BR  
2 Bedroom  
74 to 104 Sq.m
- DUPLEX  
2 Bedroom  
214 to 223 Sq.m



The floor plans and details are subject to any amendments as required by relevant authorities. The company reserves the right to change the project details without prior notice.

# Upper Floor Plans

45<sup>th</sup> | 46<sup>th</sup>

- STU  
Studio  
22 to 33 Sq.m
- 1BR  
1 Bedroom  
35.7 to 48 Sq.m
- 2BR  
2 Bedroom  
74 to 104 Sq.m
- DUPLEX  
2 Bedroom  
214 to 223 Sq.m



The floor plans and details are subject to any amendments as required by relevant authorities. The company reserves the right to change the project details without prior notice.





“Your stylish studio”

‘Cannes’  
Studio

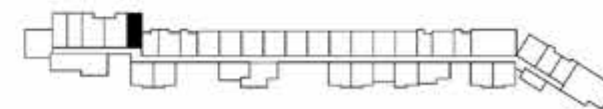


The unit layout, details and other conditions are subject to any amendments as required by relevant authorities. The company reserves the right to change the project details without prior notice.



“Your stylish studio”

‘Cannes’  
Studio



**STU-B3**  
Studio  
(32.20 sq.m.)  
Floors 7 to 19

View this unit  
at our showroom



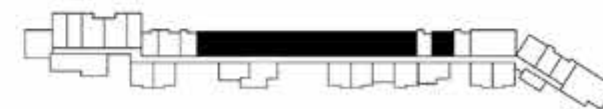
“Your desirable 1 bed”

‘Monte Carlo’  
1 Bedroom



**1BR-E1**  
1 Bedroom  
(34.55 sq.m.)  
Floors 7 to 19

View this unit  
at our showroom



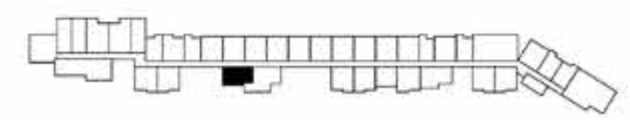


“Your desirable 1 bed”

‘Monte Carlo’  
1 Bedroom



**1BR-H**  
1 Bedroom  
(34.85 sq.m.)  
Floors 13-14 & 18-19



The unit layout, details and other specifications are subject to any amendments as required by relevant authorities. The company reserves the right to change the project details without prior notice.



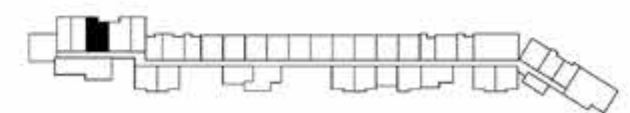
“Your desirable 1 bed”

‘Monaco’  
1 Bedroom



**1BR-B1**  
1 Bedroom  
(47.45 sq.m.)  
Floors 7 to 19

View this unit  
at our showroom

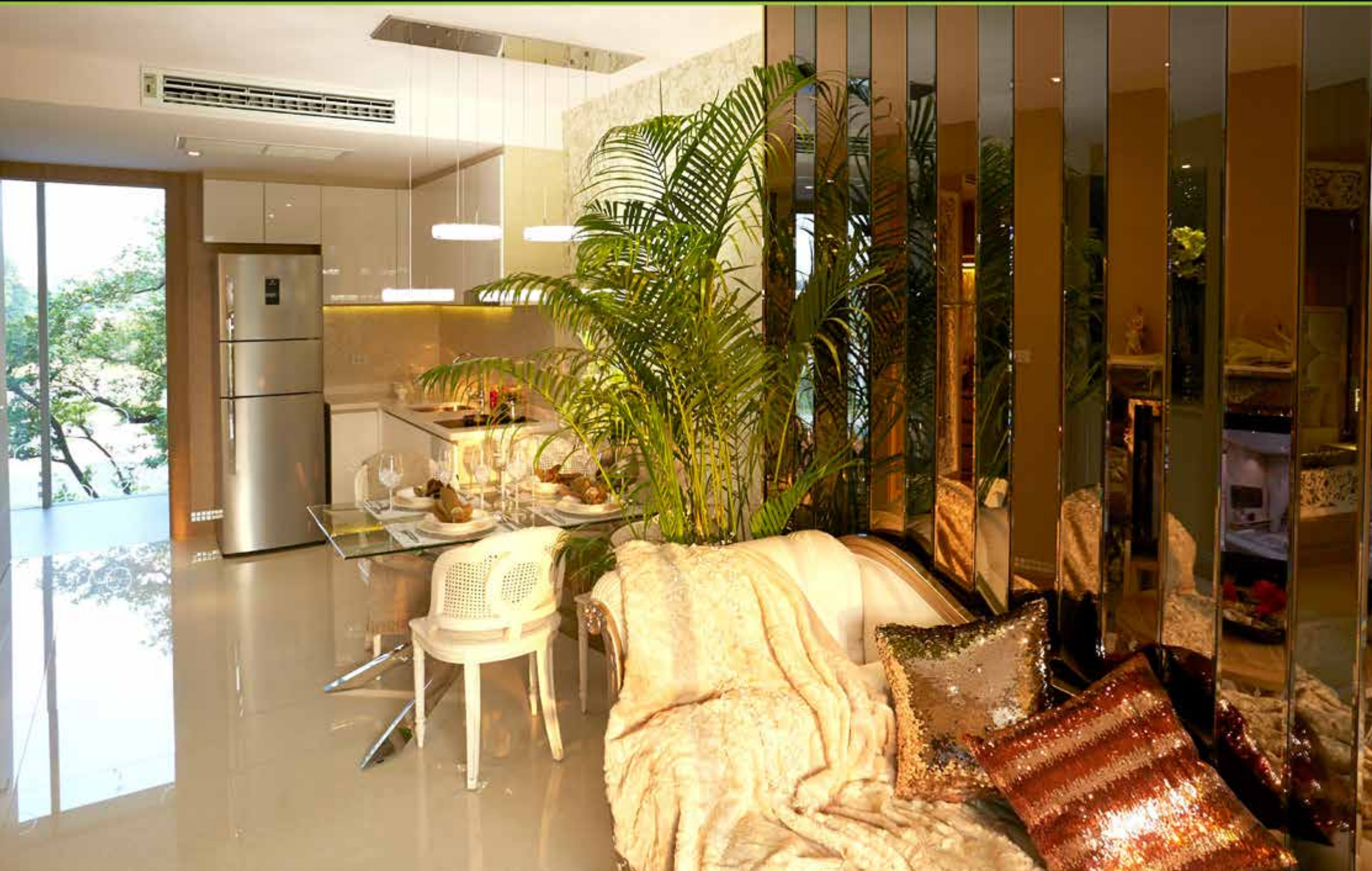


The unit layout, details and other specifications are subject to any amendments as required by relevant authorities. The company reserves the right to change the project details without prior notice.

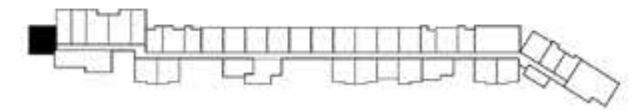


“Your desirable 1 bed”

‘Monaco’  
1 Bedroom



**1BR-C**  
1 Bedroom  
(47.75 sq.m.)  
Floors 7 to 45

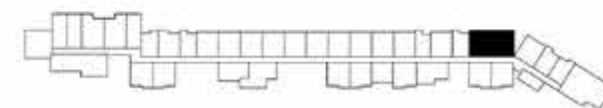


The unit layout, details and other specifications are subject to any amendments as required by relevant authorities. The company reserves the right to change the project details without prior notice.



“Your elegant 2 bed”

‘St-Tropez’  
2 Bedroom





“Your elegant 2 bed”

‘St-Tropez’  
2 Bedroom



**2BR-A**  
2 Bedroom  
(85.90 sq.m.)  
Floors 7 to 28

View this unit  
at our showroom

The unit layout, details and other specifications are subject to any amendments as required by relevant authorities. The company reserves the right to change the project details without prior notice.



“Your elegant 2 bed”

‘St-Tropez’  
2 Bedroom



The said layout, details and other specifications are subject to any amendments as required by relevant authorities. The company reserves the right to change the project details without prior notice.

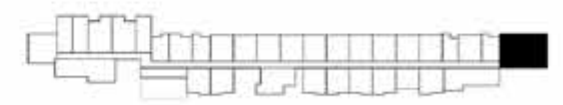


“Your elegant 2 bed”

‘St-Tropez’  
2 Bedroom



**2BR-E**  
2 Bedroom  
(92.29 sq.m.)  
Floors 34 to 36



The unit layout, details and other specifications are subject to any amendments as required by relevant authorities. The company reserves the right to change the project details without prior notice.







**DUPLEX-C**  
2 Bedroom  
(214.40 sq.m.)  
Floors 45 to 46



2<sup>nd</sup> Floor  
166.04 sq.m.

1<sup>st</sup> Floor  
48.36 sq.m.

**DUPLEX-D**  
2 Bedroom  
(223.39 sq.m.)  
Floors 45 to 46



1<sup>st</sup> Floor  
48.46 sq.m.

2<sup>nd</sup> Floor  
174.93 sq.m.

The unit layout and details are subject to any amendments as required by relevant authorities. The company reserves the right to change the project details without prior notice.

The unit layout and details are subject to any amendments as required by relevant authorities. The company reserves the right to change the project details without prior notice.

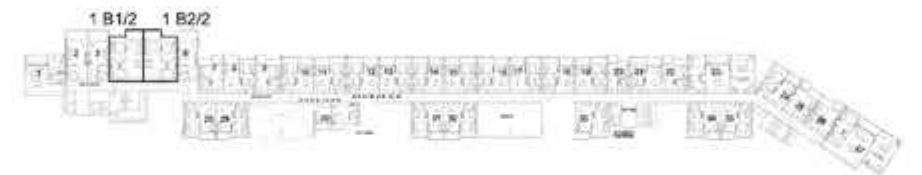


**COMBINE-A**  
 2 Bedroom  
 (69.08 - 69.40 sq.m.)  
 Floors 13-14, 18-19 (1BR D1 + 1 BR D1 = 69.08 sq.m.)  
 Floors 23-24, 28-29 (1BR D1/1 + 1 BR D1/1 = 69.20 sq.m.)  
 Floors 33-34, 38-39 (1BR D1/2 + 1 BR D1/2 = 69.40 sq.m.)



The unit layout and details are subject to any amendments as required by relevant authorities. The company reserves the right to change the project details without prior notice.

**COMBINE-B1**  
 2 Bedroom  
 (95.22 sq.m.)  
 Floors 30-41 (1BR B1/2 + 1 BR B2/2 = 95.22 sq.m.)



The unit layout and details are subject to any amendments as required by relevant authorities. The company reserves the right to change the project details without prior notice.



**COMBINE-B2**  
 2 Bedroom  
 (94.45 - 94.84 sq.m.)  
 Floors 7-19 (1BR B1 + 1BR B2 = 94.45 sq.m.)  
 Floors 20-29 (1BR B1/1 + 1BR B2/1 = 94.84 sq.m.)



The unit layout and details are subject to any amendments as required by relevant authorities. The company reserves the right to change the project details without prior notice.

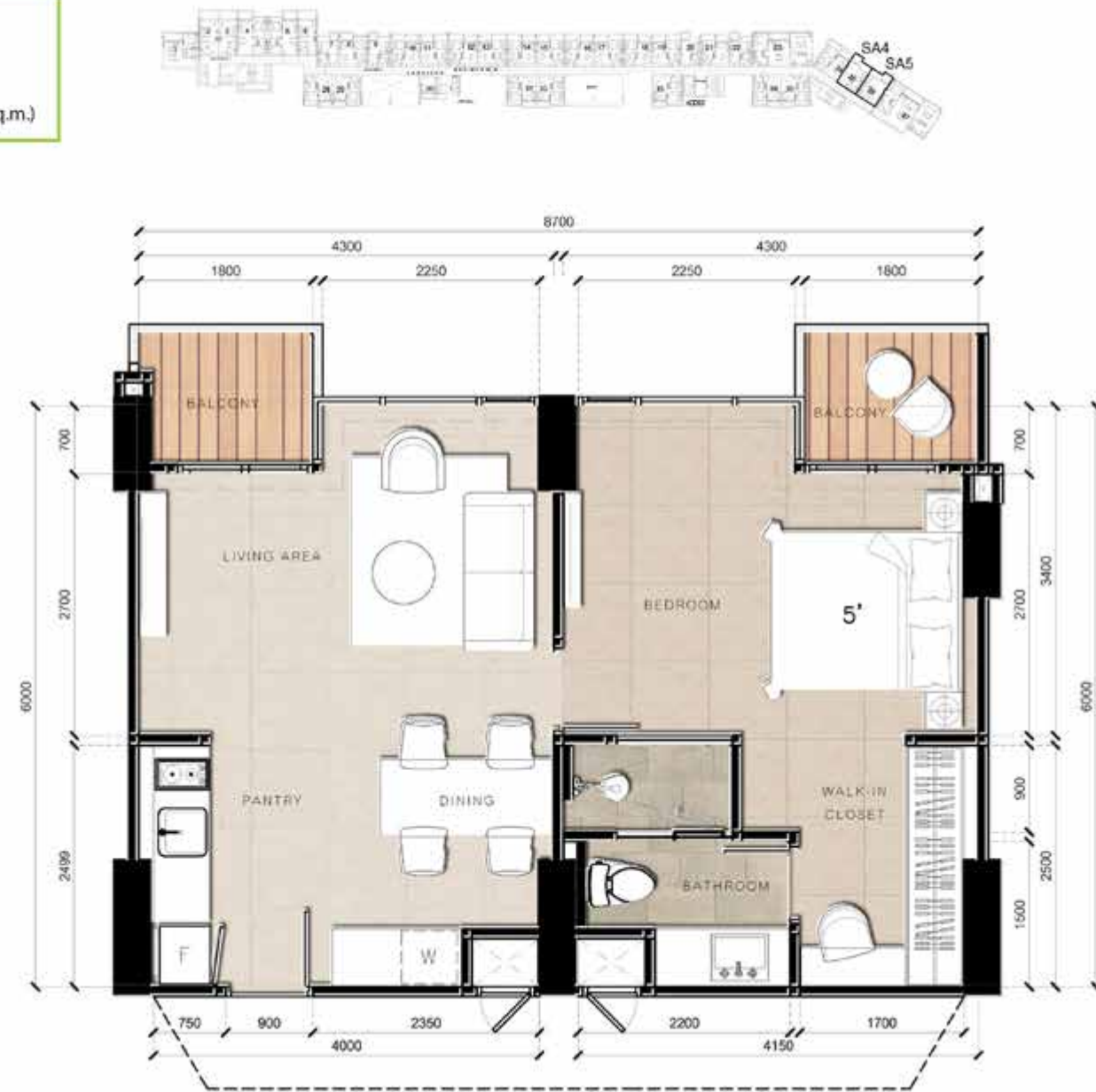
**COMBINE-C**  
 2 Bedroom  
 (69.60 - 70.60 sq.m.)  
 Floors 30-32, 35-38 (1BR E1/1 + 1 BR E1/1 = 69.60 sq.m.)  
 Floor 41 (1BR E1/2 + 1 BR E1/2 = 70.60 sq.m.)



The unit layout and details are subject to any amendments as required by relevant authorities. The company reserves the right to change the project details without prior notice.



**COMBINE-D**  
 1 Bedroom  
 (52.68 sq.m.)  
 Floors 7-23, 26-28 (STU A4 + STU A5 = 52.68 sq.m.)



The unit layout and details are subject to any amendments as required by relevant authorities. The company reserves the right to change the project details without prior notice.

**COMBINE-E**  
 1 Bedroom  
 (65.50 - 65.70 sq.m.)  
 Floors 7-19 (STU B1 + STU B2 = 65.50 sq.m.)  
 Floors 20-29 (STU B1 + STU B2/1 = 65.60 sq.m.)  
 Floors 30-41, 43, 45 (STU B1 + STU B2/2 = 65.70 sq.m.)



The unit layout and details are subject to any amendments as required by relevant authorities. The company reserves the right to change the project details without prior notice.



**COMBINE-F**

3 Bedroom  
(127.66 sq.m.)

Floors 35-41 (1BR B1/2 + 1BR B2/2 + STU B3/2 = 127.66 sq.m.)



The unit layout and details are subject to any amendments as required by relevant authorities. The company reserves the right to change the project details without prior notice.

**COMBINE-F2**

3 Bedroom

(126.65 - 127.66 sq.m.)

Floors 7-19 (1BR B1 + 1BR B2 + STU B3 = 126.65 sq.m.)  
Floors 20-29 (1BR B1/1 + 1BR B2/1 + STU B3/1 = 127.19 sq.m.)  
Floors 30-34 (1BR B1/2 + 1BR B2/2 + STU B3/2 = 127.66 sq.m.)



The unit layout and details are subject to any amendments as required by relevant authorities. The company reserves the right to change the project details without prior notice.



**COMBINE-G**  
 2 Bedroom  
 (87.80 - 89.05 sq.m.)  
 Floors 30-39 (STU A1/1 + 1BR A/1 + STU A2/1 = 87.80 sq.m.)  
 Floors 40-41 (STU A1/2 + 1BR A/2 + STU A2/2 = 89.05 sq.m.)



The unit layout and details are subject to any amendments as required by relevant authorities. The company reserves the right to change the project details without prior notice.

**COMBINE-H**  
 1 Bedroom  
 (61.50 - 62.25 sq.m.)  
 Floors 30-39 (STU A1/1 + 1BR A/1 = 61.50 sq.m.)  
 Floors 40-41 (STU A1/2 + 1BR A/2 = 62.25 sq.m.)



The unit layout and details are subject to any amendments as required by relevant authorities. The company reserves the right to change the project details without prior notice.





CREATING INCREDIBLE LIFESTYLES